

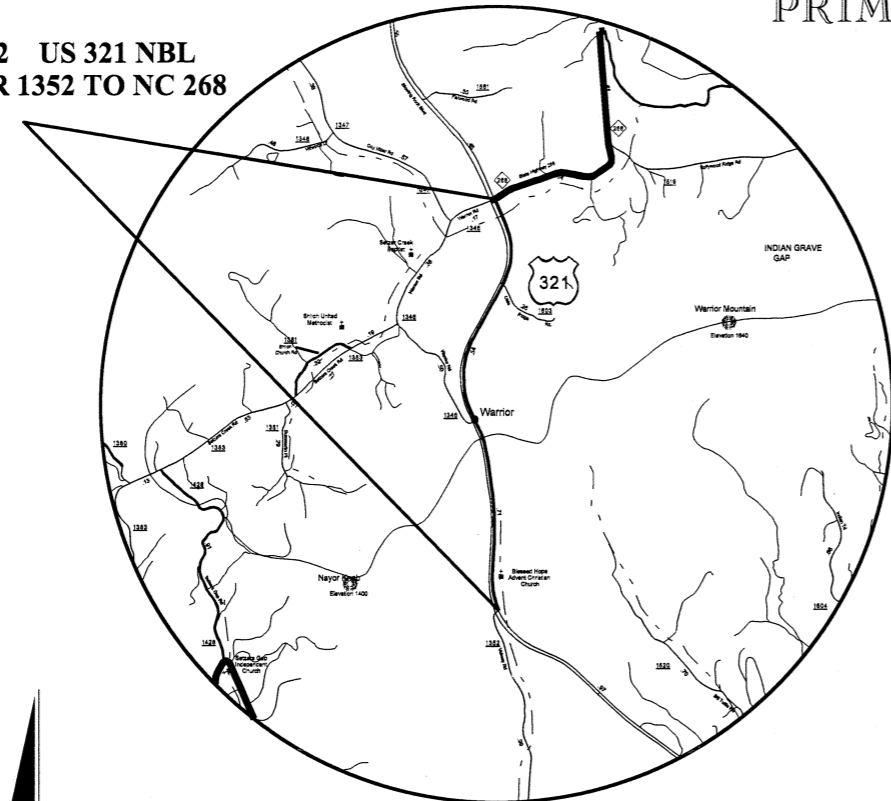
STATE OF NORTH CAROLINA
DIVISION OF HIGHWAYS

2014

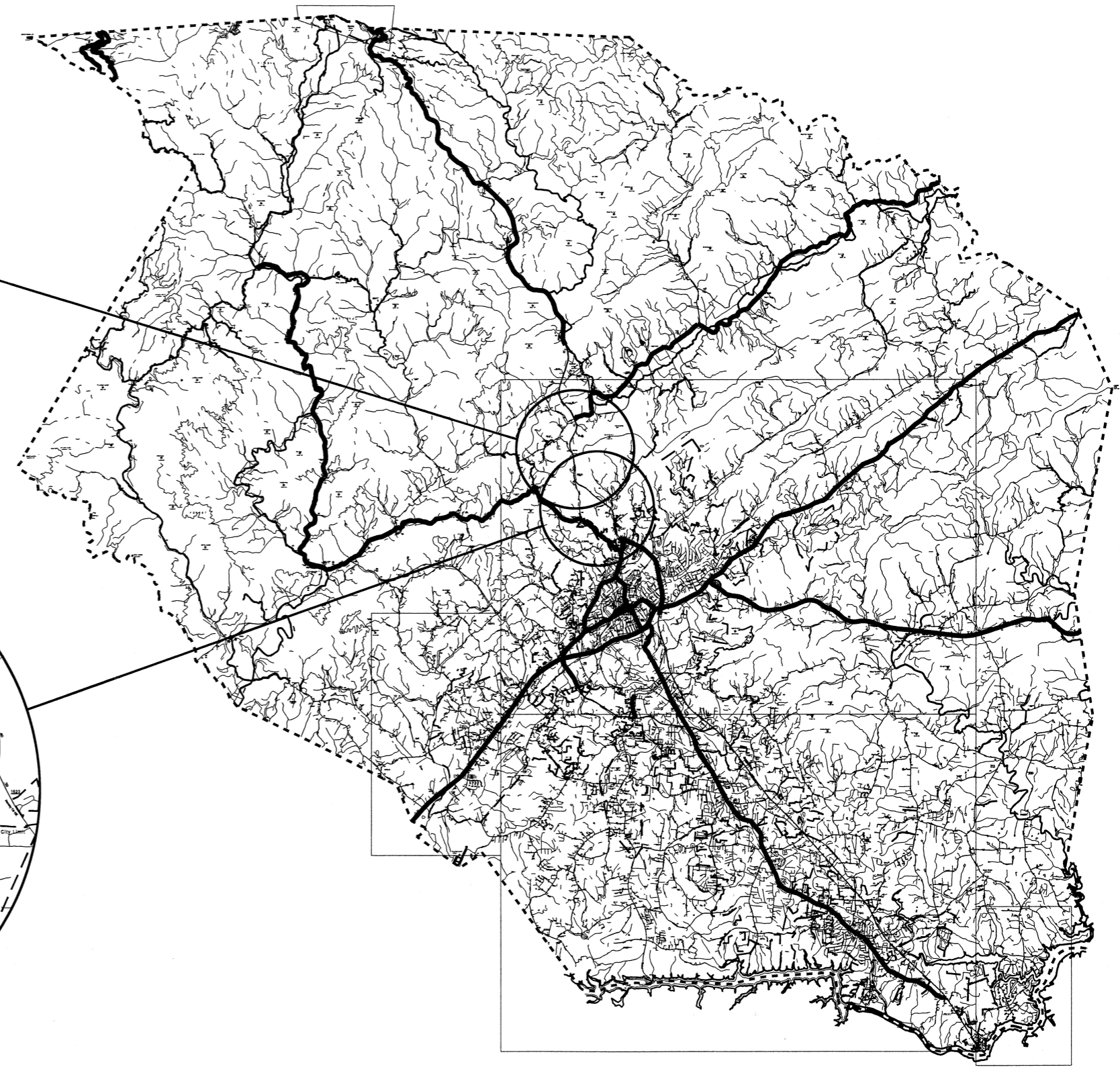
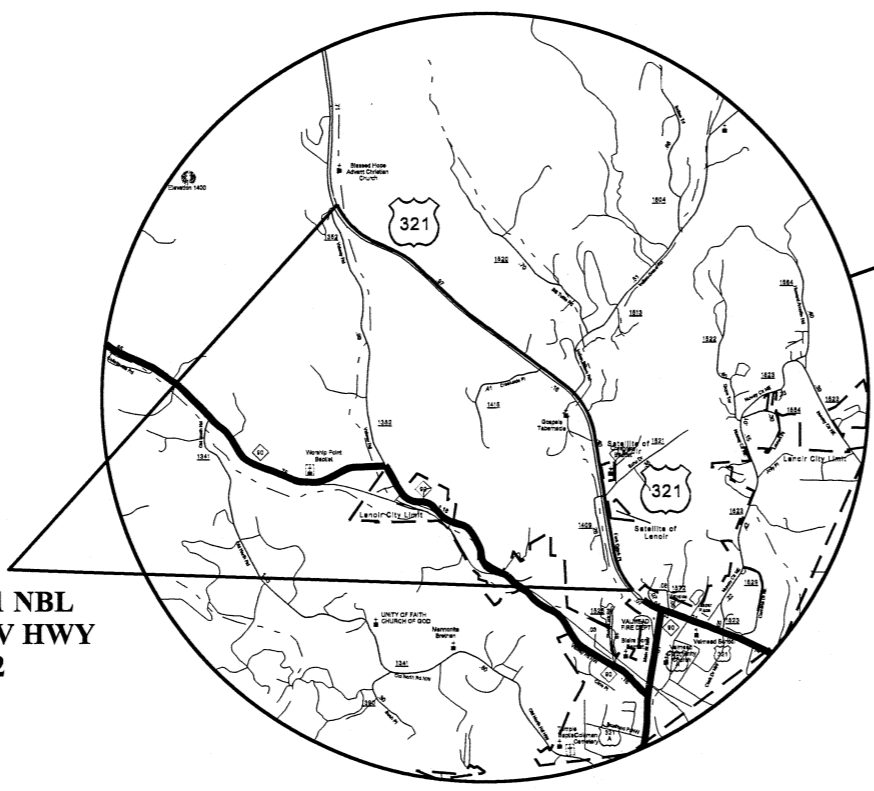
CALDWELL COUNTY

PRIMARY ASPHALT RESURFACING

MAP #2 US 321 NBL
FROM SR 1352 TO NC 268



MAP #1 US 321 NBL
FROM BEGIN DIV HWY
TO SR 1352



8/17/99
07-FEB-2014 16:30
C:\Users\j... Documents\Project Manager\Contracts\Resurfacing\2014\2014 Supplemental Resurfacing\District 3\2014 Caldwell Supplemental Resurfacing Maps.dgn

MAP #3 US 421 NBL
FROM 4,000' SOUTH OF BRIDGE
AT EXIT 272 TO BRIDGE AT EXIT 276

STATE OF NORTH CAROLINA
DIVISION OF HIGHWAYS

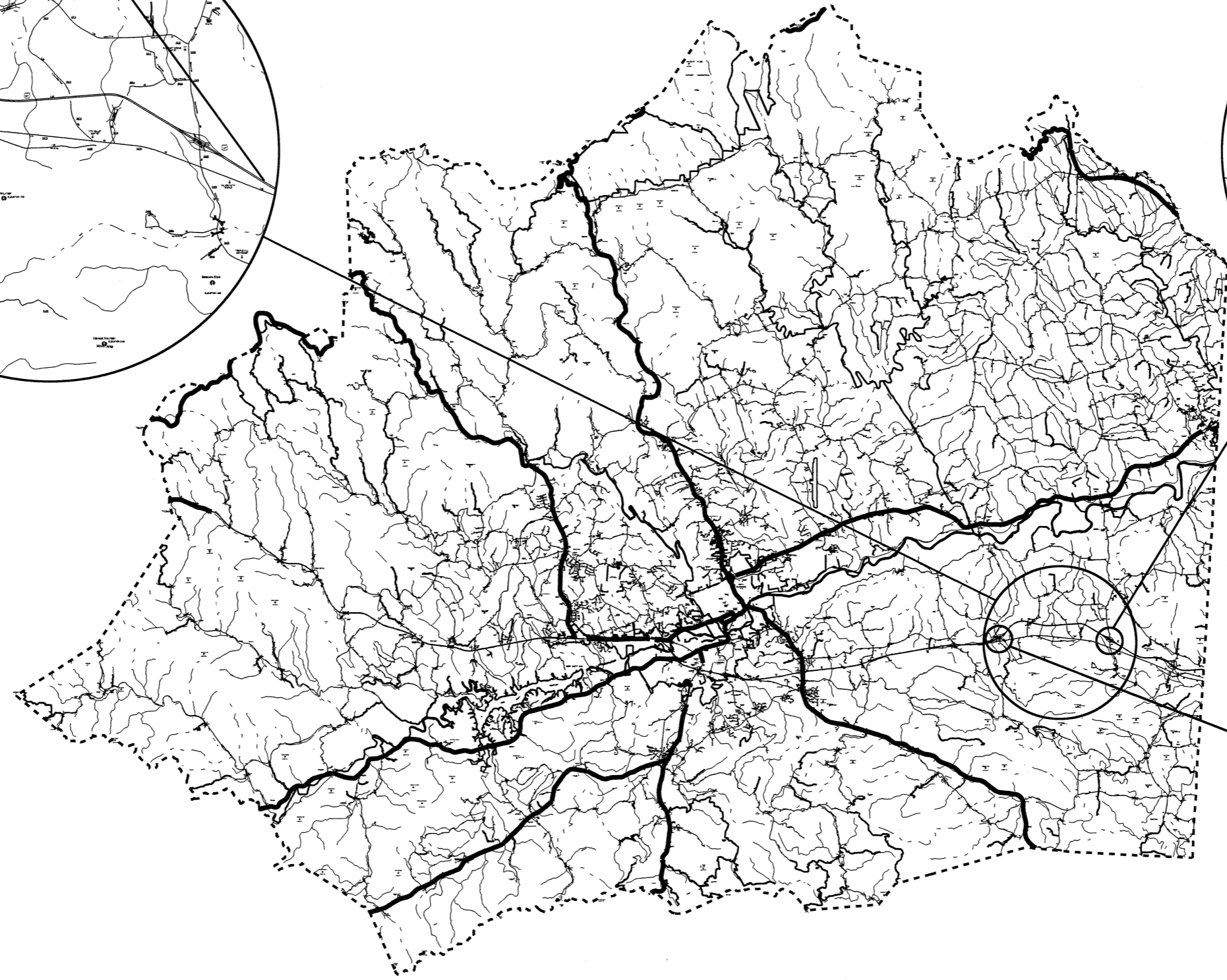
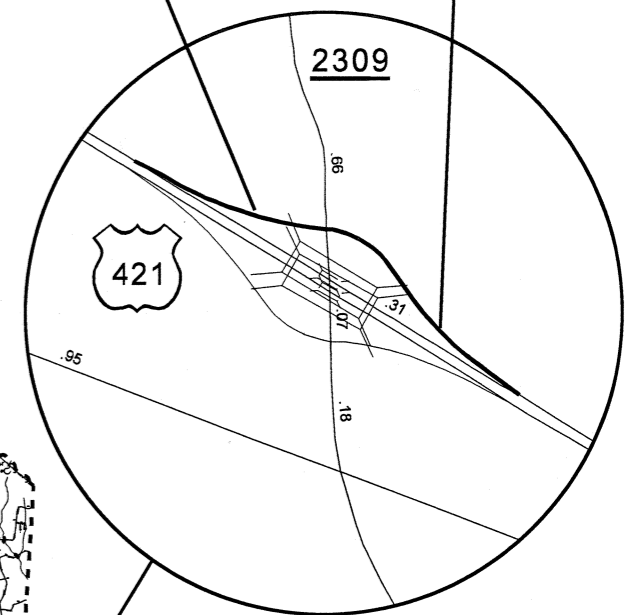
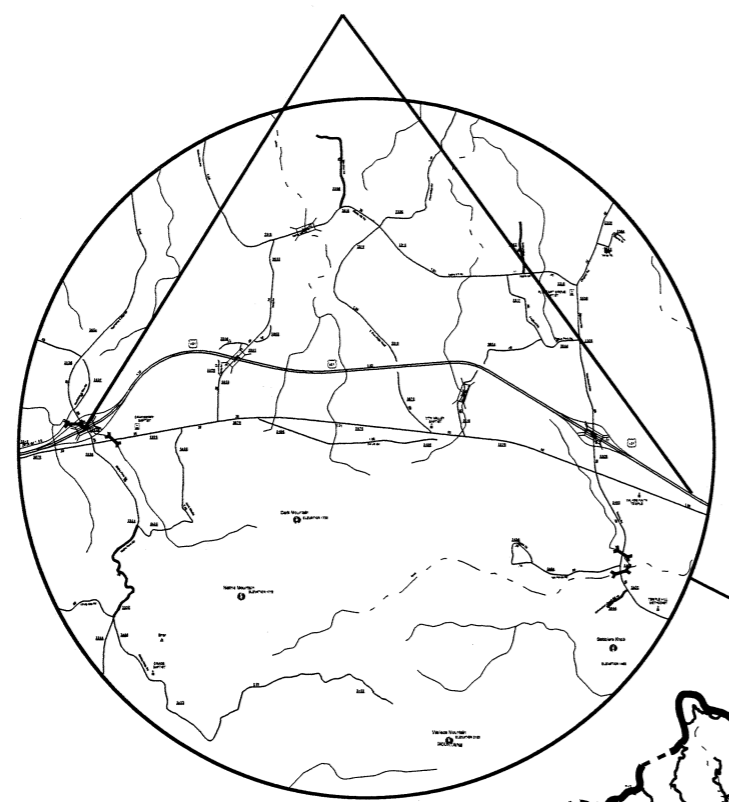
2014

MAP #4 US 421 NBL OFF-RAMP
(EXIT 272)
FROM US 421 NBL TO SR 2309

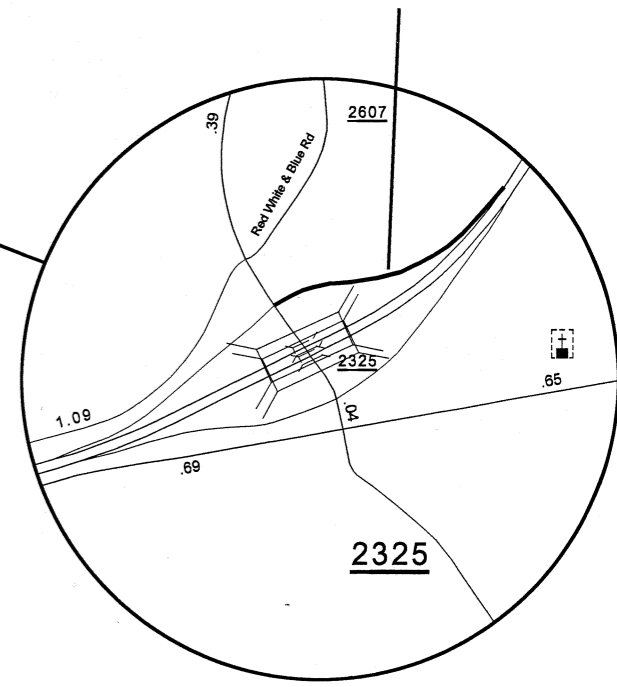
WILKES COUNTY

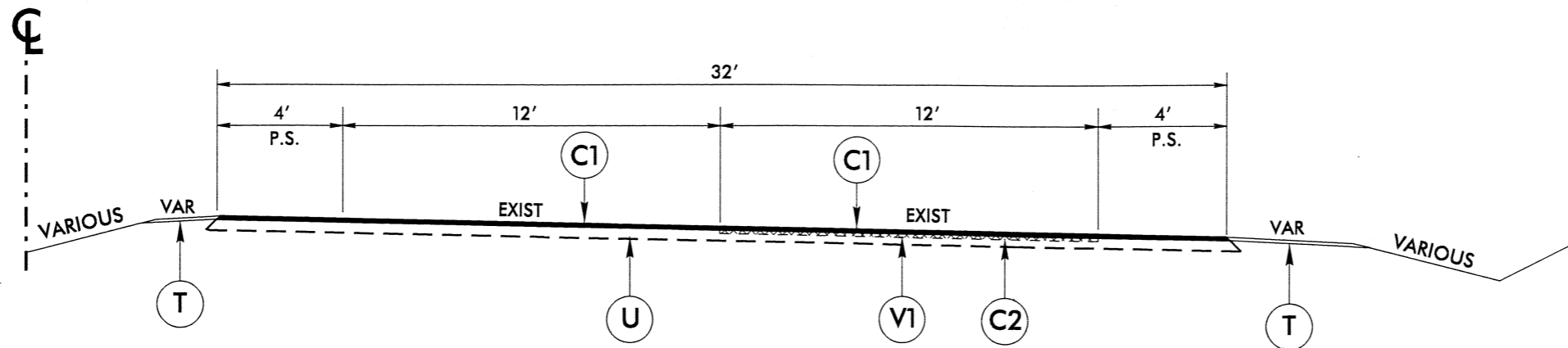
PRIMARY ASPHALT RESURFACING

MAP #5 US 421 NBL ON-RAMP
(EXIT 272)
FROM SR 2309 TO US 421 NBL



MAP #6 US 421 NBL OFF-RAMP
(EXIT 276)
FROM US 421 NBL TO SR 2325



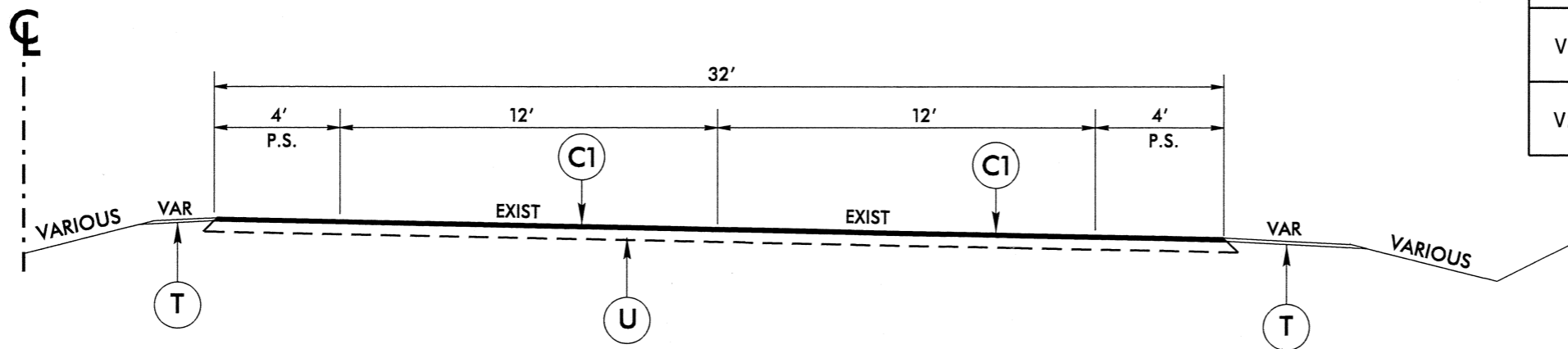


TYPICAL SECTION NO. 1

MAP 1 - US 321 NBL FROM BEGIN DIV HWY TO SR 1352
 MAP 2 - US 321 NBL FROM SR 1352 TO NC 268

* MILL INSIDE LANE AT LOCATIONS AS DIRECTED BY THE ENGINEER

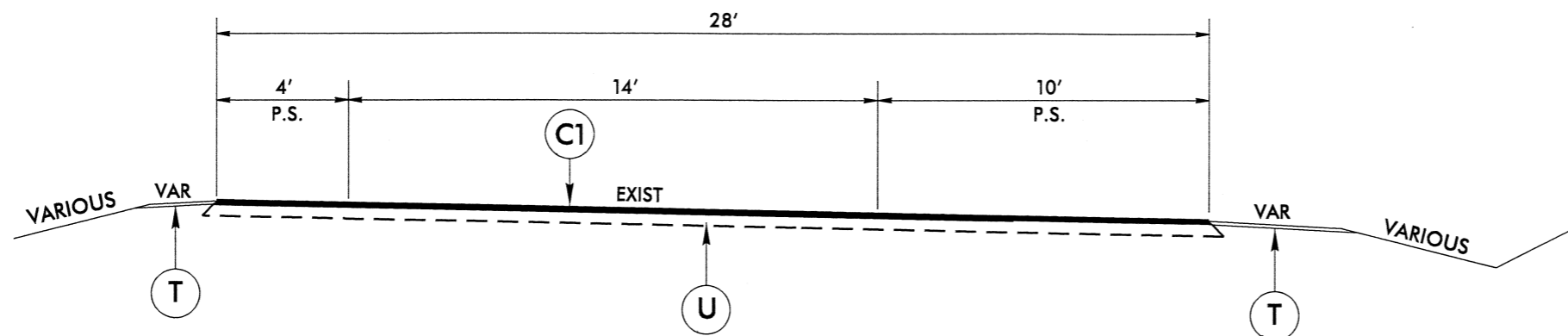
PAVEMENT SCHEDULE	
C1	PROP. APPROX. 1½" ASPHALT CONCRETE SURFACE COURSE, TYPE S9.5C, AT AN AVERAGE RATE OF 168 LBS. PER SQ. YD. (OVERLAY)
C2	PROP. APPROX. 1½" ASPHALT CONCRETE SURFACE COURSE, TYPE S9.5C, AT AN AVERAGE RATE OF 168 LBS. PER SQ. YD. (MILL AND FILL)
T	SHOULDER RECONSTRUCTION
U	EXISTING PAVEMENT
V1	MILLING OF EXISTING ASPHALT PAVEMENT AT DEPTH OF 1½"
V2	INCIDENTAL MILLING



TYPICAL SECTION NO. 2

MAP 3 - US 421 NBL FROM 4,000' SOUTH OF BRIDGE AT EXIT 272 TO BRIDGE AT EXIT 276

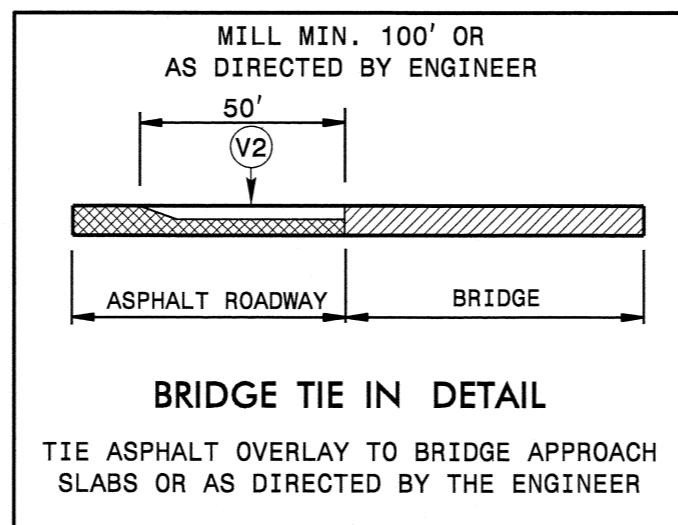
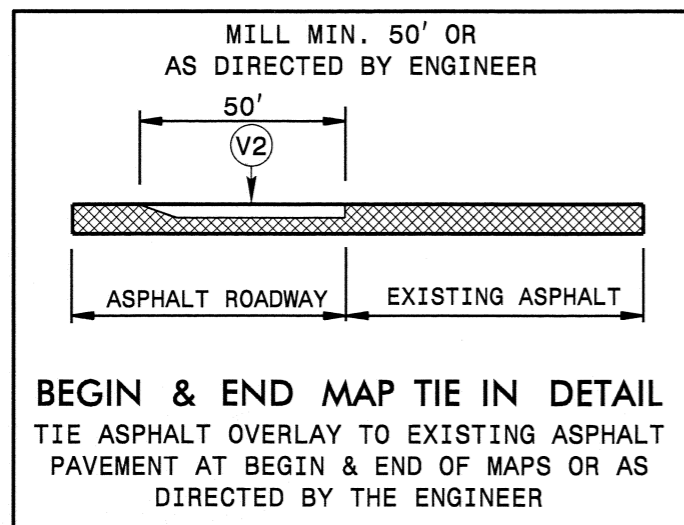
CALDWELL - WILKES COUNTIES PRIMARY RESURFACING		
DIVISION II		
REVISIONS	INIT.	DATE
N.C. DEPARTMENT of TRANSPORTATION DIVISION of HIGHWAYS DIVISION ELEVEN		SCALE: N/A DATE: 01/2014 PREPARED BY: J. L. LAWS REVIEWED BY:



TYPICAL SECTION NO. 3

MAP 4 – US 421 NBL OFF RAMP (EXIT 272) FROM US 421 NBL TO SR 2309
 MAP 5 – US 421 NBL ON RAMP (EXIT 272) FROM SR 2309 TO US 421 NBL
 MAP 6 – US 421 NBL OFF RAMP (EXIT 276) FROM US 421 NBL TO SR 2325

PAVEMENT SCHEDULE	
C1	PROP. APPROX. 1½" ASPHALT CONCRETE SURFACE COURSE, TYPE S9.5C, AT AN AVERAGE RATE OF 168 LBS. PER SQ. YD. (OVERLAY)
C2	PROP. APPROX. 1½" ASPHALT CONCRETE SURFACE COURSE, TYPE S9.5C, AT AN AVERAGE RATE OF 168 LBS. PER SQ. YD. (MILL AND FILL)
T	SHOULDER RECONSTRUCTION
U	EXISTING PAVEMENT
V1	MILLING OF EXISTING ASPHALT PAVEMENT AT DEPTH OF 1½"
V2	INCIDENTAL MILLING



**CALDWELL - WILKES
 COUNTIES
 PRIMARY RESURFACING**

DIVISION II

REVISIONS	INIT.	DATE

**N.C. DEPARTMENT of TRANSPORTATION
 DIVISION of HIGHWAYS
 DIVISION ELEVEN**

SCALE: N/A DATE: 01/2014
 PREPARED BY: J. L. LAWS
 REVIEWED BY: _____
 REVIEWED BY: _____

PROJECT NO.	SHEET NO.	TOTAL NO.
11CR.10141.21, 11CR.10971.21	6	7

SUMMARY OF QUANTITIES

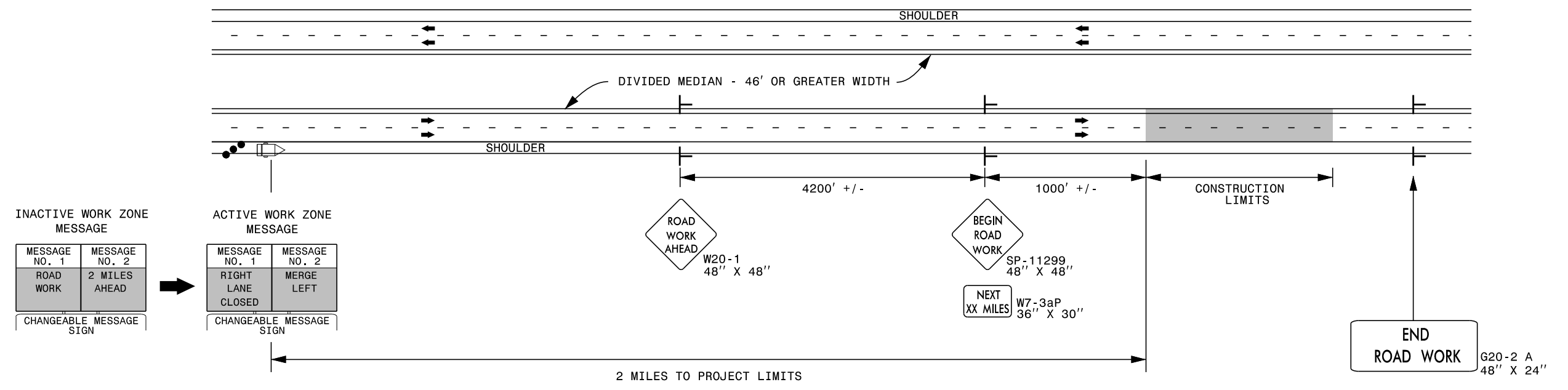
PROJECT NO	COUNTY	MAP NO	ROUTE	DESCRIPTION	TYP NO	LANES	LANE TYPE	FINAL SURFACE TESTING REQUIRED	WARMMX ASPHALT REQUIRED	LENGTH M	WIDTH FT	BORROW EXCAVATION CY	SHOULDER RECONSTRUCTION SM	1½" MILLING SY	INCIDENTAL MILLING SY	SURFACE COURSE, S9.5C TONS	ASPHALT BINDER FOR PLANT MX TONS	MILLED RUMBLE STRIPS (ASPHALT CEMENT CONCRETE) LF	SEED & MULCHING AC
11CR.10141.21	Caldwell	1	US 321 NBL	FROM BEGIN DIV HWY TO SR 1352	1	2	MD	NO	NO	1.95	32	390	3.90	15,728	111	4,780	282		1.45
11CR.10141.21	Caldwell	2	US 321 NBL	FROM SR 1352 TO NC 268	1	2	MD	NO	NO	1.58	32	316	3.16	12,700	111	4,000	236		1.15
TOTAL FOR PROJ NO. 11CR.10141.21										3.53		706	7.06	28,428	222	8,780	518		2.60
11CR.10971.21	Wilkes	3	US 421 NBL	FROM 4,000' SOUTH OF BRIDGE AT EXIT 272 TO BRIDGE AT EXIT 276	2	2	MD	NO	NO	4.6	32	920	9.20		2,520	7,530	444	48,576	3.40
11CR.10971.21	Wilkes	4	US 421 NBL OFF RAMP (EXIT 272)	FROM US 421 NBL TO SR 2309	3	1	MD	NO	NO	0.41	28	82	0.82		270	630	37		0.30
11CR.10971.21	Wilkes	5	US 421 NBL ON RAMP (EXIT 272)	FROM SR 2309 TO US 421 NBL	3	1	MD	NO	NO	0.43	28	86	0.86		220	570	34		0.32
11CR.10971.21	Wilkes	6	US 421 NBL OFF RAMP (EXIT 276)	FROM US 421 NBL TO SR 2325	3	1	MD	NO	NO	0.36	28	72	0.72		270	515	30		0.26
TOTAL FOR PROJ NO. 11CR.10971.21										5.8		1,160	11.60		3,280	9,245	545	48,576	4.28
GRAND TOTAL										9.33		1,866	18.66	28,428	3,502	18,025	1,063	48,576	6.88

PROJECT NO.	SHEET NO.	TOTAL NO.
11CR.10141.21, 11CR.10971.21	7	7

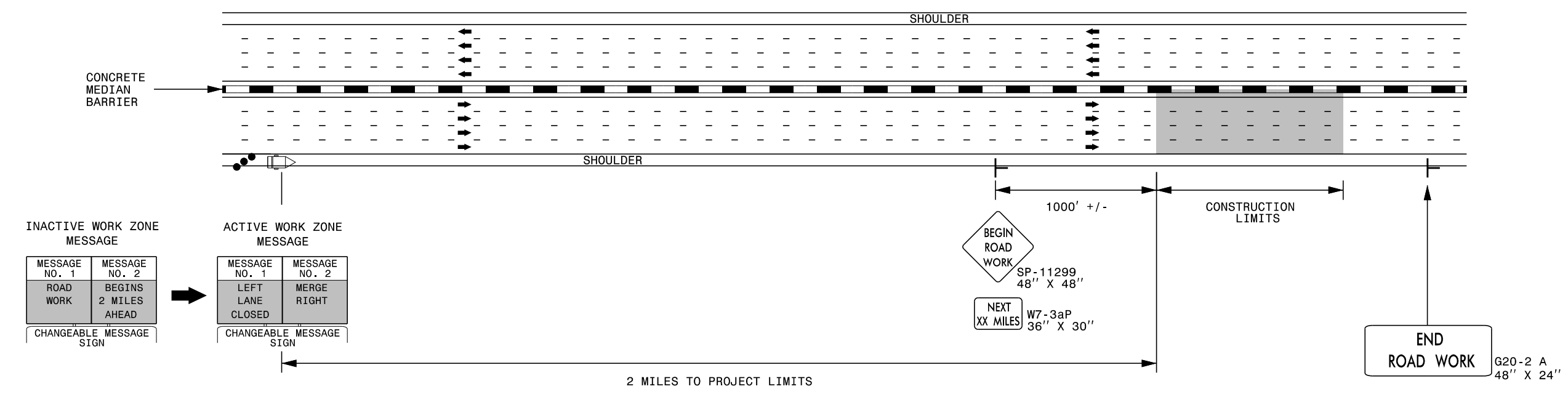
THERMOPLASTIC AND PAINT QUANTITIES

PROJECT NO	COUNTY	MAP NO	ROUTE	DESCRIPTION	TYP NO	LANES	LANE TYPE	LENGTH	WIDTH	4413000000-E	4457000000-N	4810000000-E		4815000000-E		4820000000-E	4845000000-N			4905000000-N	
										WRK ZONE ADVANCE/GENERAL WARNING SIGNING SF	TEMPORARY TRAFFIC CONTROL LS	4" WHITE PAINT LF	4" YELLOW PAINT LF	6" WHITE PAINT LF	6" YELLOW PAINT LF	8" WHITE PAINT LF	PAINT LT ARROW EA	PAINT STR ARROW EA	PAINT RT ARROW EA	PAINT MERGE ARROW EA	SNOW PLOWABLE MARKERS EA
11CR.10141.21	Caldwell	1	US 321 NBL	FROM BEGIN DIV HWY TO SR 1352	1	2	MD	1.95	32	126.00	1.00	31,840	22,090				30	40	6		130
11CR.10141.21	Caldwell	2	US 321 NBL	FROM SR 1352 TO NC 268	1	2	MD	1.58	32	126.00	*	26,460	17,800				30	40	6		105
TOTAL FOR PROJ NO. 11CR.10141.21								3.53		252		58,300	39,890				60	80	12		235
												98,190					152				
11CR.10971.21	Wilkes	3	US 421 NBL	FROM 4,000' SOUTH OF BRIDGE AT EXIT 272 TO BRIDGE AT EXIT 276	2	2	MD	4.6	32	192.00	*			60,720	48,576						306
11CR.10971.21	Wilkes	4	US 421 NBL OFF RAMP (EXIT 272)	FROM US 421 NBL TO SR 2309	3	1	MD	0.41	26		*			10,960	3,750	2,080	2		2		30
11CR.10971.21	Wilkes	5	US 421 NBL ON RAMP (EXIT 272)	FROM SR 2309 TO US 421 NBL	3	1	MD	0.43	26		*			4,700	1,850	1,920				6	30
11CR.10971.21	Wilkes	6	US 421 NBL OFF RAMP (EXIT 276)	FROM US 421 NBL TO SR 2325	3	1	MD	0.36	26		*			5,300	2,600	1,650	2		2		30
TOTAL FOR PROJ NO. 11CR.10971.21								5.8		192				81,680	56,776	5,650	4		4	6	396
														138,456			14				
GRAND TOTAL								9.33		444	1	58,300	39,890	81,680	56,776	5,650	64	80	16	6	631
												98,190		138,456			166				

DIVIDED MEDIANS WITH WIDTHS 46' OR GREATER



DIVIDED MEDIANS WITH WIDTHS LESS THAN 46' OR WITH PERMANENT MEDIAN BARRIER

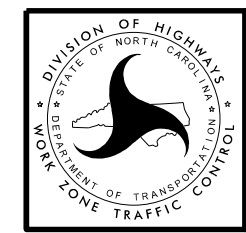


NOTES:

- 1) LATERAL CLEARANCE AT ALL SIGN LOCATIONS SHALL BE 6' AS MEASURED FROM THE EDGE OF PAVEMENT.
- 2) MOUNT SIGNS THAT ARE LARGER THAN 10 SQUARE FEET IN AREA ON TWO OR MORE WOOD OR U-CHANNEL SUPPORTS. PERFORATED SQUARE TUBING SUPPORT SYSTEMS MAY SUPPORT LARGER AREAS ON A SINGLE SUPPORT. FOLLOW MANUFACTURER'S RECOMMENDATIONS. THESE SYSTEMS SHALL BE NCHRP 350 COMPLIANT AND NCDOT APPROVED.
- 3) FOR MEDIAN WIDTHS LESS THAN 46' (MEASURED EDGELINE TO EDGELINE) USE THE BOTTOM DRAWING.
- 4) IF STATIONARY GENERAL WARNING SIGNS ARE USED, THEY WILL BE PAID FOR PER SECTION 104 OF THE NCDOT STANDARD SPECIFICATIONS AS EXTRA WORK.
- 5) INSTALL "ROAD WORK AHEAD" (W20-1) ALONG ENTRANCE RAMP 500' PRIOR TO RAMP TERMINAL, AND "END ROAD WORK" (G20-2a) AT THE END OF EXIT RAMP WITHIN THE WORK ZONE.
- 6) IF MILLED AREAS ARE NOT PAVED BACK BY THE END OF THE WORK DAY, PORTABLE SIGNS SHALL BE USED TO WARN DRIVERS OF THE PRESENT CONDITIONS. THESE ARE TO INCLUDE, BUT NOT LIMITED TO "ROUGH ROAD" W8-8, "UNEVEN LANES" W8-11, "GROOVED PAVEMENT" W8-15 w/MOTORCYCLE PLAQUE MOUNTED BELOW. THESE ARE TO BE DOUBLE INDICATED ON MULTI-LANE ROADWAYS WITH SPEED LIMITS 45 MPH AND GREATER AND WITH DIVIDED MEDIANS OF 46' OR GREATER. THESE PORTABLE SIGNS ARE INCIDENTAL TO THE OTHER ITEMS OF WORK INCLUDED IN THE TEMPORARY TRAFFIC CONTROL (LUMP SUM) PAY ITEM.

LEGEND

- CHANGEABLE MESSAGE SIGN (CMS)
- STATIONARY SIGN
- DIRECTION OF TRAFFIC FLOW
- TRAFFIC DRUM



**RESURFACING ADVANCE
WARNING SIGNS FOR
HIGH SPEED FACILITIES
≥ 60 MPH**

10/3/2013 8:11:11 AM S:\T\U\W\ZTC\Resurfacing\2013\Documents\New_Procedures_05_09_2013\Resurfacing_AdvWarn_HSpd.dgn User:frmgarratt